



SU FAST

ULTRASONIC SENSOR



- ✓ Very quick response time:
1 msec
- ✓ Detect the edge of materials
opaque to sound and others
- ✓ Measuring range 22 mm
- ✓ Users' friendly interface
- ✓ Quick and easy calibration
- ✓ Latest generation electronics
with the possibility of
customization
- ✓ Compact design
- ✓ High noise protection
- ✓ Selectable outputs 0÷5V,
0÷10V, 4÷20 mA, 0÷10 mA,
0÷20 mA

SU FAST ultrasonic sensors are specifically designed for detecting of the edges of materials such as paper, carton, plastic film of any colour or transparent. It is also able to detect the position of some materials that usually require infrared sensors.

The compact design guarantees an easy installation in all kind of applications.

SU FAST sensor is equipped with latest generations components that guarantee a measuring range of 22 mm and very quick response times.

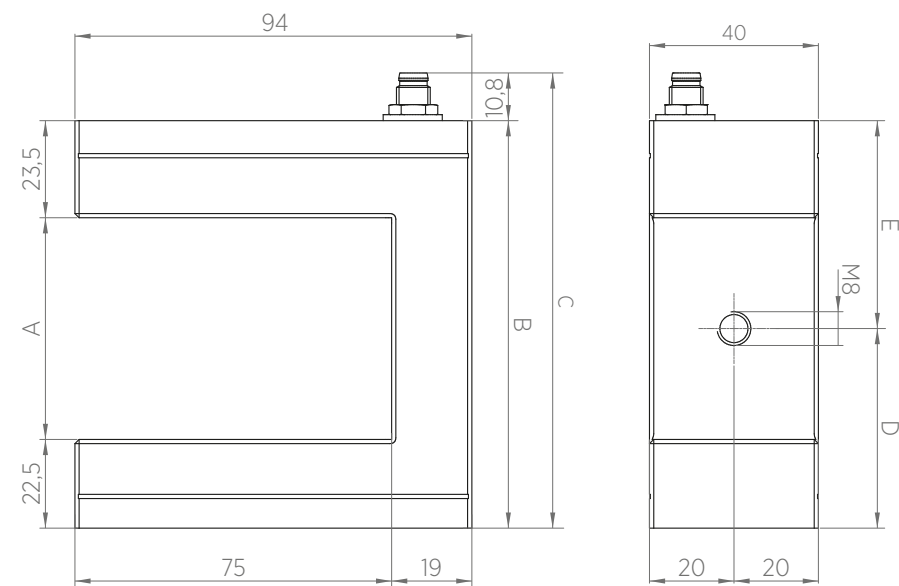
SU FAST is provided with an onboard keypad with two buttons for the calibration and a 9 digits barred for an easy and quick calibration and control of the web inside the fork.

Two outputs 0÷5V, 0÷10V, always available and selectable by the customer, allow the sensor to be suitable for any kind of web guiding system. MLO version offers additional outputs: 4÷20 mA, 0÷10 mA, 0÷20 mA.

The sensor is available with 50 mm and 100 mm fork width.

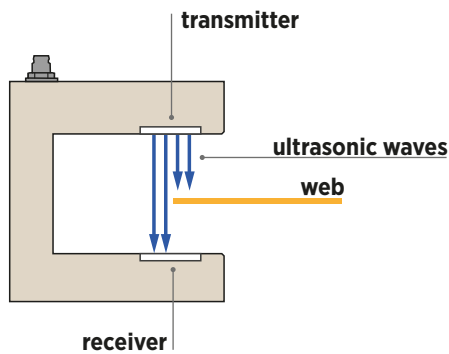
SU FAST has been completely designed, tested and realized by Re S.p.A.

TECHNICAL DRAWING



| | SU FAST - 50 | SU FAST - 100 |
|---|--------------|---------------|
| A | 52,5 | 100 |
| B | 98,5 | 146 |
| C | 109,3 | 156,8 |
| D | 48,75 | 72,5 |
| E | 49,75 | 73,5 |

FUNCTIONING



SU FAST is equipped with two ultrasonic capsules, the transmitter one generates an ultrasonic wave sequence which is converted into electric signal by the receiver one. According to the intensity of the signal received, the microprocessor can identify how much of the sensitive surface of the capsule is covered by the material inserted in the fork and calculate the position of the web edge.

TECHNICAL CHARACTERISTICS

| | SU.FAST-B50/B100 | SU FAST-B50/B100 MLO |
|-------------------------------|----------------------|--|
| Power supply | 12÷24 Vdc | 12÷24 Vdc |
| Power consumption max | < 40 mA | < 40 mA |
| Measuring range | ± 11 mm (22 mm tot.) | ± 11 mm (22 mm tot.) |
| Fork width | 50 mm o 100 mm | 50 mm o 100 mm |
| Ultrasonic frequency | 49 kHz | 49 kHz |
| Response time | 1 msec | 1 msec |
| Analogue outputs - selectable | 0÷5 Vdc 0÷10 Vdc | 0÷5 Vdc 0÷10 Vdc 4÷20 mA 0÷10 mA 0÷20 mA |
| Cable length | max 30 m | max 30 m |
| Connector | M8 4 poles | M8 4 poles |
| Working temperature | 10÷50° C | 10÷50° C |
| IP protection class | Ip20 | Ip20 |

*Data are subject to technical change without notice



Re

Re S.p.A.
via Firenze 3
20060 Bussero (MI) Italy

T +39 02 9524301
F +39 02 95038986
E info@re-spa.com

Assistenza tecnica
Technical support
T +39 02 952430.300
E support@re-spa.com

Assistenza commerciale
Sales support
T +39 02 952430.200
E sales@re-spa.com